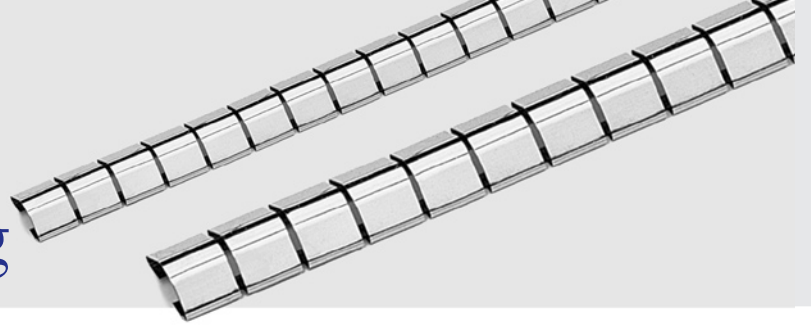


5210 Series Track Mounting



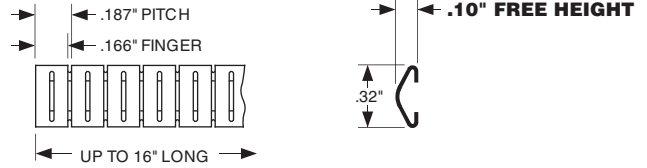
5210-01A32-XX

SYMMETRICAL

Compression Force

	25% Compression (0.075")	50% Compression (0.050")
Standard	9.1 lbs/ft	18.1 lbs/ft

Note: For use with Track TR52.



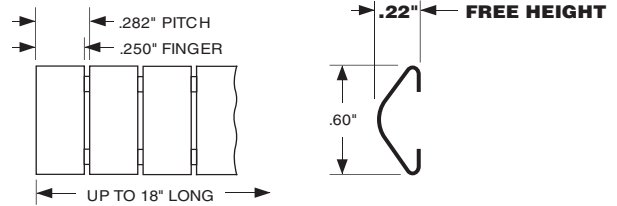
Consult factory for the availability of longer lengths.

5210-01D60-XX

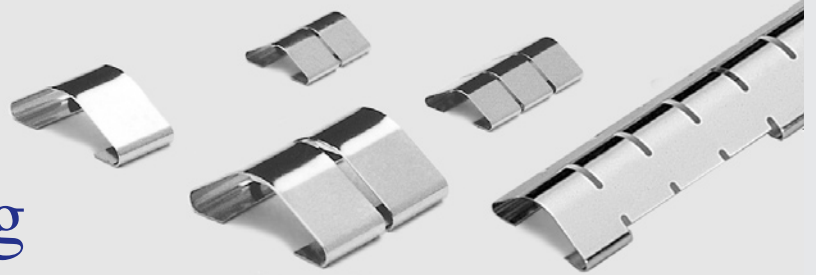
SYMMETRICAL

Compression Force

	25% Compression (0.165")	50% Compression (0.110")
Standard	11 lbs/ft	27 lbs/ft
"TF" Style	4.0 lbs/ft	10 lbs/ft



5220 Series Snap-on Mounting



5220-02C32-XX

SYMMETRICAL

GAP RANGE UP TO .06"

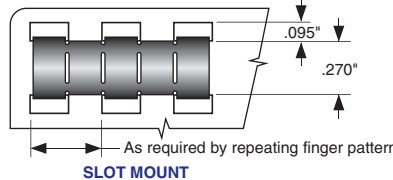
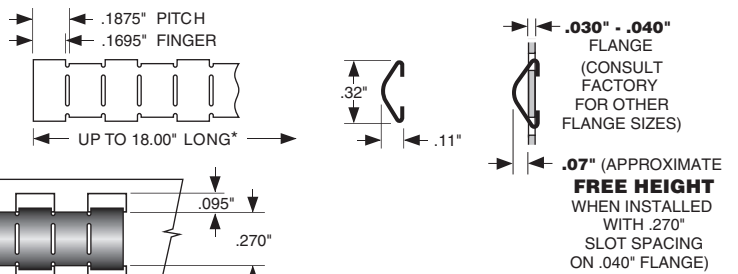
Compression Force

	25% Compression (0.053")	50% Compression (0.035")
Standard	2.7 lbs/ft	14 lbs/ft
"TF" Style	2.5 lbs/ft	6.5 lbs/ft

APPLICATION DATA

Note:

1. *Actual length determined by finger pattern.



SLOT MOUNT

5220-03C32-XX

SYMMETRICAL

GAP RANGE UP TO .06"

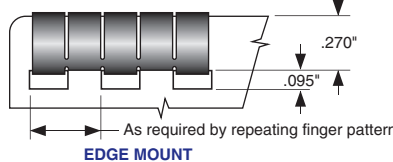
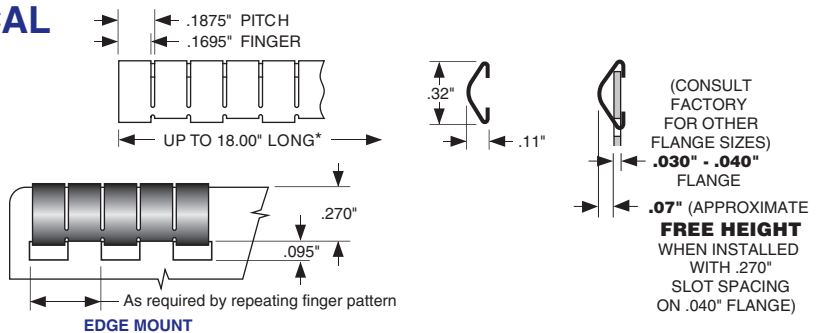
Compression Force

	25% Compression (0.053")	50% Compression (0.035")
Standard	4.1 lbs/ft	14 lbs/ft
"TF" Style	1.1 lbs/ft	1.3 lbs/ft

APPLICATION DATA

Note:

1. *Actual length determined by finger pattern.



EDGE MOUNT