

Series Solid Core Round Cable Ferrites (MRI Series)

Product Summary

Easiest and most common economical 850-Perm Nickel Zinc Ferrite designed to attenuate and suppress unwanted broadband RF noise with no loss of power or signal strength.

Product Application

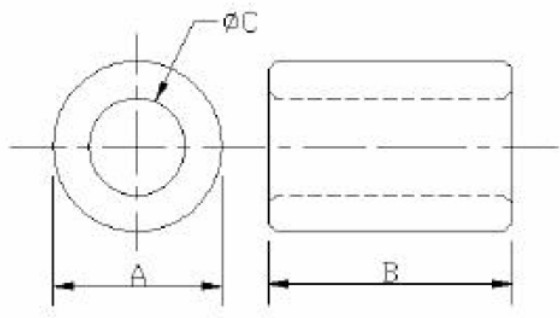
Typically installed before cables are terminated, our MRI – Series Solid core beads are available with I.D.'s exceeding .542-inches (13.77mm). Often, smaller cables are wound with two or three turns to amplify impedance. Impedance ratio is proportional to the square of the amount of turns. The 17-parts in this series will provide suppression from 1MHz through 1GHz with the highest attenuation above 100MHz, and peaks are noted in the data table. Multiple cables can also be run through the same core.



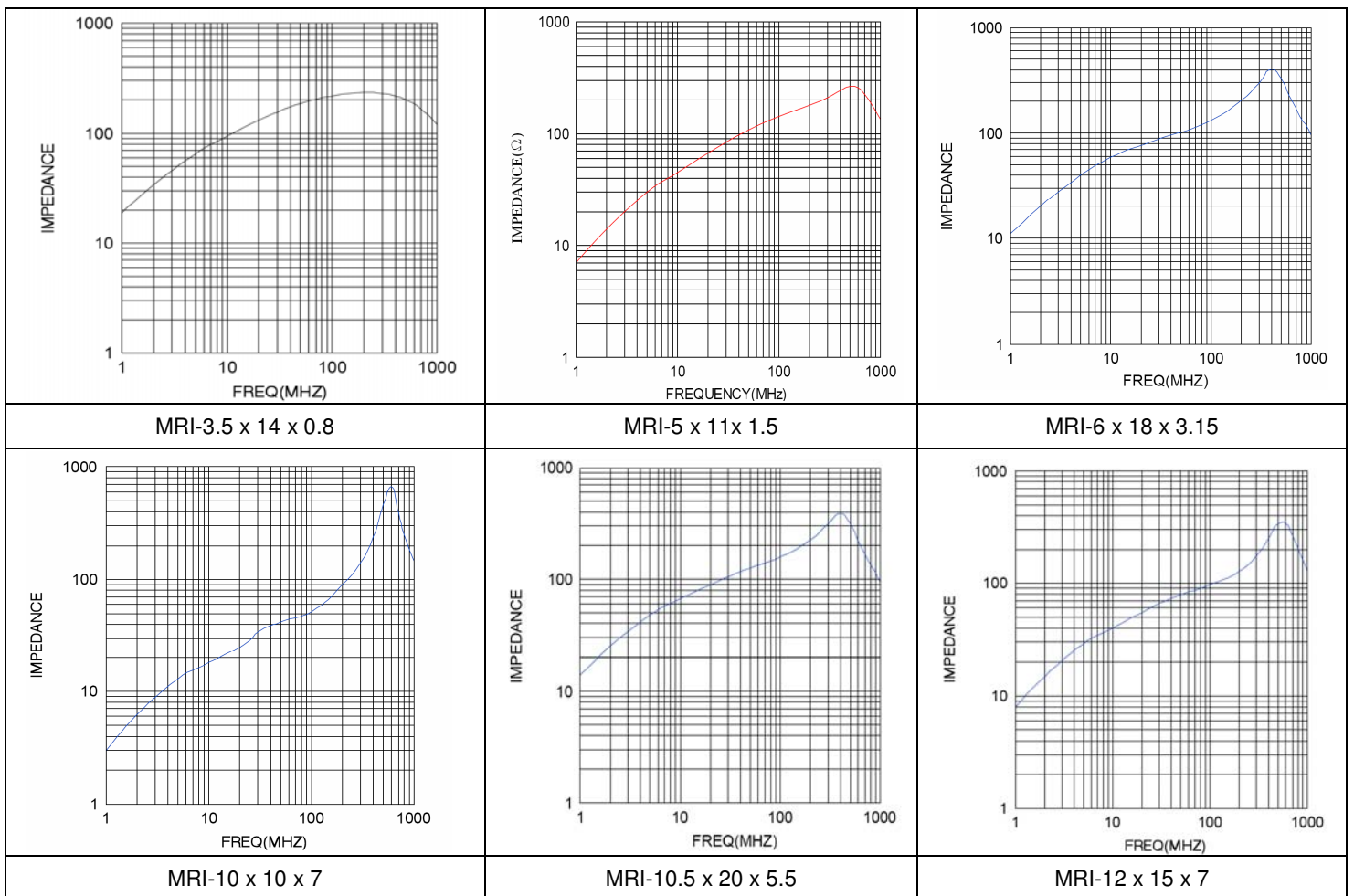
Product Technical Data

Figure	P/N	A	B	C	Impedance In OHMS		
					25 MHz	100 MHz	Peak MHz
1	MRI-3.5 x 14 x 0.8	3.5 mm	14.0 mm	52.4 mm	Z ₁ = 100	Z ₂ = 160	200 Ohm @ 250 MHz
2	MRI-5 x 11 x 1.5	5.0 mm	11.0 mm	1.5 mm	Z ₁ = 55	Z ₂ = 100	350 Ohm @ 550 MHz
3	MRI-6 x 18 x 3.15	6.0 mm	18.00 mm	3.15 mm	Z ₁ = 70	Z ₂ = 110	400 Ohm @ 400 MHz
4	MRI-7.9 x 19 x 3	7.9 mm	19 mm	3 mm	Z ₁ = 90	Z ₂ = 120	300 Ohm @ 400 MHz
5	MRI-10 x 10 x 7	10 mm	10 mm	7 mm	Z ₁ = 15	Z ₂ = 35	650 Ohm @ 700 MHz
6	MRI-10.5 x 20 x 5.5	10.5 mm	20 mm	5.5 mm	Z ₁ = 75	Z ₂ = 125	350 Ohm @ 400 MHz
7	MRI-12 x 15 x 7	12 mm	15 mm	7 mm	Z ₁ = 30	Z ₂ = 60	350 Ohm @ 550 MHz
8	MRI-14.2 x 15 x 8	14.2 mm	15 mm	8 mm	Z ₁ = 20	Z ₂ = 55	1000 Ohm @ 800 MHz
9	MRI-14.2 x 28.5 x 6.35	14.2 mm	28.5 mm	6.35 mm	Z ₁ = 126	Z ₂ = 200	300 Ohm @ 250 MHz
10	MRI-15.88 x 28.57 x 7.87	15.88 mm	28.57 mm	7.87 mm	Z ₁ = 110	Z ₂ = 157	350 Ohm @ 350 MHz
11	MRI-16 x 28 x 7	16 mm	28 mm	7 mm	Z ₁ = 120	Z ₂ = 175	300 Ohm @ 250 MHz
12	MRI-16 x 28 x 9	16 mm	28 mm	9 mm	Z ₁ = 90	Z ₂ = 150	350 Ohm @ 350 MHz
13	MRI-17.07 x 25.4 x 8.76	17.07 mm	25.4 mm	8.76 mm	Z ₁ = 90	Z ₂ = 150	350 Ohm @ 250 MHz
14	MRI-17.5 x 35 x 9.5	17.5 mm	35 mm	9.5 mm	Z ₁ = 100	Z ₂ = 215	350 Ohm @ 200 MHz
15	MRI-19 x 29 x 13	19 mm	29 mm	13 mm	Z ₁ = 60	Z ₂ = 110	350 Ohm @ 400 MHz
16	MRI-25.91 x 28.57 x 12.83	25.91 mm	28.57 mm	12.83 mm	Z ₁ = 110	Z ₂ = 170	300 Ohm @ 300 MHz
17	MRI-28.5 x 28.57 x 13.77	28.5 mm	28.57 mm	13.77 mm	Z ₁ = 108	Z ₂ = 173	300 Ohm @ 200 MHz

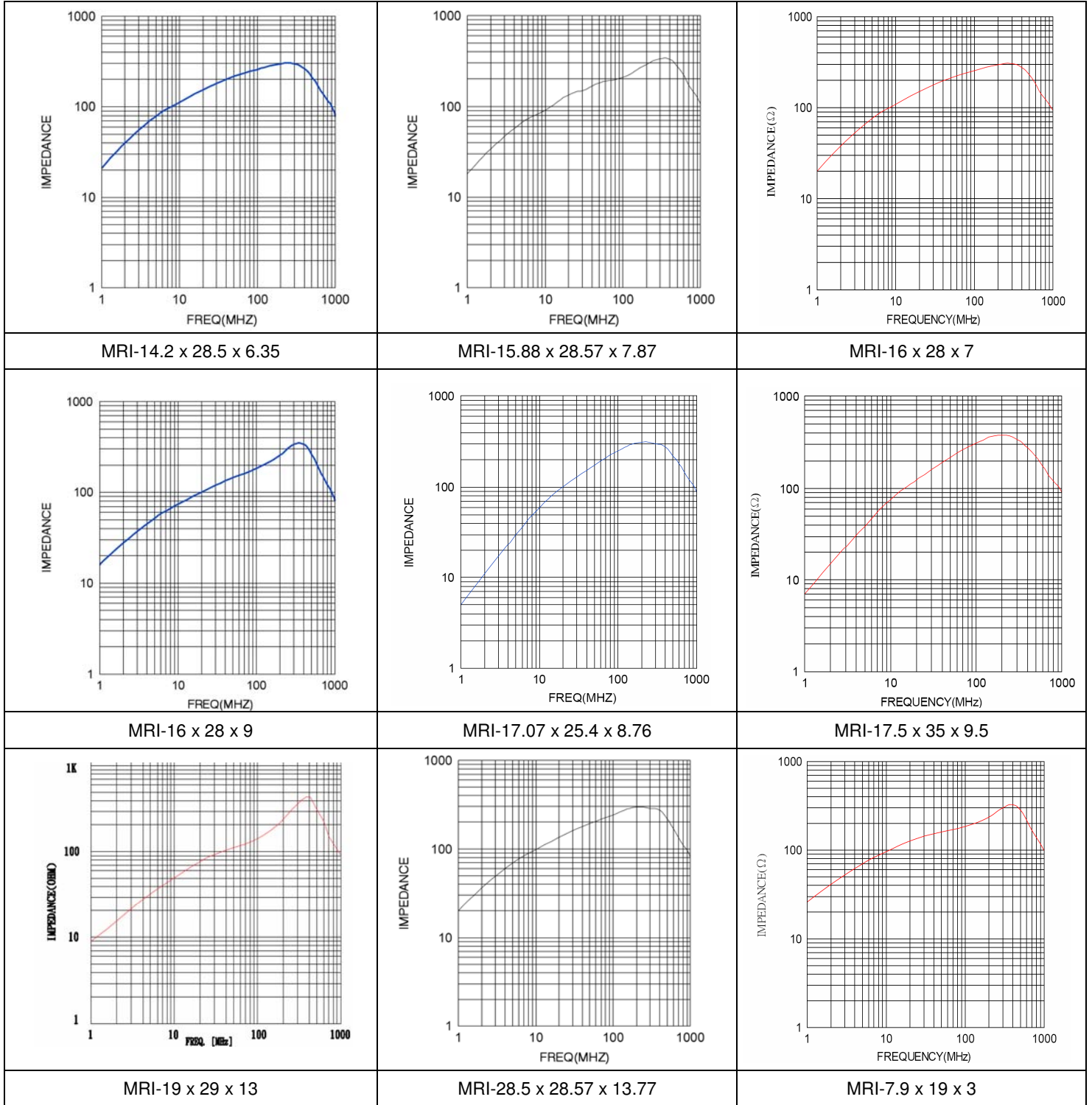
Series Solid Core Round Cable Ferrites (MRI Series) (Cont.)



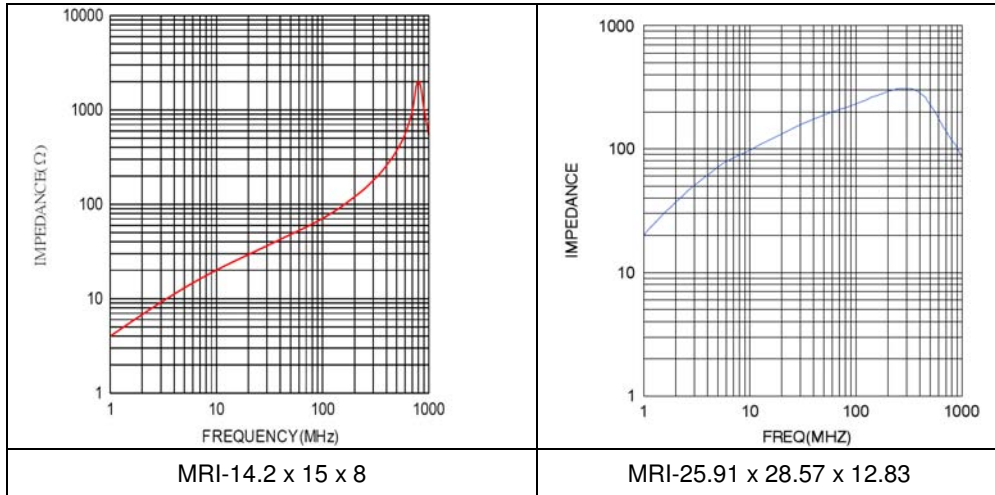
Impedance Chart



Series Solid Core Round Cable Ferrites (MRI Series) (Cont.)



Series Solid Core Round Cable Ferrites (MRI Series) (Cont.)



HUBZONE Certified and Veteran Owned Manufacturer
MAJR Products Corporation
17540 State Highway 198
Saegertown, PA 16433
PH: (814) 763-3211 FX: (814) 763-2952
www.majr.com email; sales@majr.com